

Fall 2013 Winter 2014 TRENDS



presented by:

 CLUB BEAD PLUS

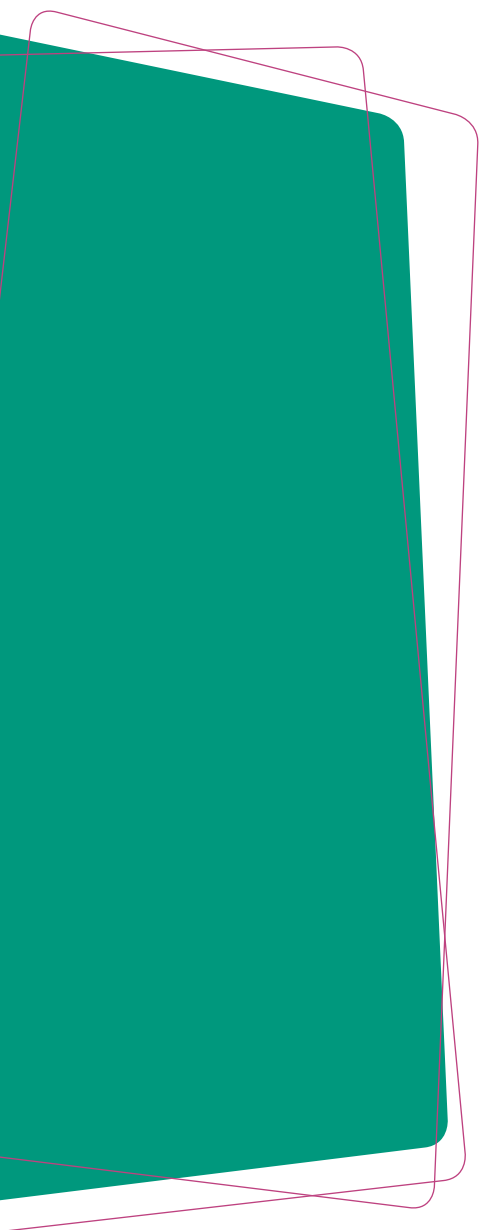


Table of contents	2
Fashion Wear Trends	4
<ul style="list-style-type: none"> Austerity RSVP Masculine Plural Action reaction Base Camp Contemporary art gallery Miss Hitchcock <i>Rock the Casbah</i> Dusk The great Gatsby 	
Color Trends	14
<ul style="list-style-type: none"> Black / White Blue Violet and Purple Gray Red Green Beige and Brown Yellow Pink Orange 	
Duos	24
<ul style="list-style-type: none"> Beige & Black / White & Carnation Blue & Black / Brown & Grey Brown & Black / Grey & Black Yellow & Black / Black & White Black & Gold / Red & Black 	

Jewelry Trends	29
Jewelry types	29
<ul style="list-style-type: none"> Necklace Earrings Bracelets Rings Broaches 	
The components	39
<ul style="list-style-type: none"> The chain Stones and Crystals The gemstones Leather Pearls Tassels Crosses 	
Jewelry themes	45
<ul style="list-style-type: none"> Spiky jewelry! Green, green and green! The year of the snake Rigidité Organic Floral 	

Fashion Wear Trends



Dolce & Gabbana

SOBER COLORS,
DECORUM,
CLOSED NECKLINES,
AUSTERITY,
SHARP LOOK
DEVOID OF
FRIVOLOUSNESS.



Marni



Aurélie Bidermann



Tory Burch



Valentino

Austerity

This season, our designers got caught up in a dress code frenzy, thus creating a very chaste trend that honors sober colors, closed necklines, wool jackets and austerity. This trend in grey, black and white reflects a strict style, ordered and devoid of frivolity. Skirts and dresses are half-length in size and they highlight longlineal silhouettes. Some of the accessories that are presented reflect class and are devoid of frivolousness

Fashion Wear Trends



Carlos Miele



Kara Ross



Hervé Van der Straeten



Ben-Amun

Oscar de la Renta



Badgley Mischka



BEAUTY, ELEGANCE,
RICHNESS, BRILLIANCE, DRESSES,
LUXURIOUS CLOTHS, ROYAL FESTIVITIES, FINESSE

RSVP

Elegance, finesse, richness, royal festivities, here are key words of this trend that brings forward beautiful outfits and luxurious cloths. Lace, silk, embroidery, beadwork, lamé and fur are being honored. Dresses with baroque volume and patterns can be seen, showing echoes of dresses that were once worn at royal courts. The esthetic and finesse of the lines make these evening dresses chic and elegant. The jewelry pieces that accompany these outfits are colorful, embellished with stones and crystals. Long earrings often accompany these attires.



Moschino

BOYISH LOOK, SUITS, MAN SUITS, ELEGANCE, SOBER, CHIC, CLASSIC PATTERNS, JACKETS



Stella McCartney



Kara Ross



Kara Ross



Eddie Borgo



Dsquared2

Masculine Plural

The modern history of male attire is illustrated in this feminine trend. Turn after turn, the dandy, banker and gangster looks have been presented to us. The chic and sober declinations recall the sharpness of Sunday clothes. The elegance and practicality of the masculine outfit can be found in that trend. Patterns are classic: stripes, check (or diamond) pattern, paisley, flowers, as well as fabrics like tweed, wool, velvet, fur, silk, leather, baize, crepe, and wool felt. Blazers are long or short, large or waisted sometimes worn with a skirt or a dress, adding a feminine touch to this masculine look. For more creativity, add accessories such as hats, jewels, scarves, ties and boots.



Betsey Johnson



Hermès



Rag & Bone



Michael Kors



Lele Sadoughi

SPORT,
VIVID AND
NEUTRAL
COLORS
CONTRAST,
SPORT CUTS,
STRETCHY
FABRIC, EVERY
DAY WEAR,
PRACTICAL.

Action Reaction

Once more, sport has its place on the podium. Clothes inspired from competition wear such as swimming, running, biking and fencing wear but also from leisure sports such as parachuting, motorcycle, horseback riding and polo. Sometimes it's simply a small touch of sport wear, especially in vivid colors that are often matched with black or grey. Cuts and fabrics such as quilted leather, jersey, velvet frieze and synthetic elastic fabrics also show echoes of sport gear. Zipper sweaters and blazers and lateral stripes on pants or sleeves, the perfecto® jacket and leggings are noticeable.

Fashion Wear Trends



Michael Kors



Lele Sadoughi



Lele Sadoughi



CA&LOU



Ralph Lauren



Haider Ackermann

MILITARY UNIFORM,
CAMOUFLAGE PATTERN,
MILITARY INSIGNIAS, AVIATOR JACKET,
DUFFLE COAT, SOLDIER JACKET, GENDARMERIE

Base Camp

The military influence has impacted fashion for the last couple of years on the podiums. The novelty this season is the addition of bright colors such as yellow, red and blue to the traditional military colors. Camouflage patterns or military badges are still present but a second look is at times needed to notice the military cut of some clothes. Some pieces can't lie, such as the aviator jacket, the soldier jacket, the British cavalry uniform, the duffle coat of the British marine, the British marine's navy cap or the pith helmet. This trend is very accessible and will please those who like a casual yet fancy look. The most fanciful will opt for oversized ultra contemporary camouflage patterns.



VPL



Antonio Marras



Hervé Van der Straeten



Wilfredo Rosado



Kara Ross



Givenchy

ARTISTIC,
CONTEMPORARY,
MODERN,
GRAPHIC ART,
ABSTRACT, POP
ART, COLLAGES,
AND COLORFUL,
ANIMAL
PATTERNS

Contemporary Art Gallery

This trend is similar to a collective art exposition where artists present distinctive and unique art pieces. Our designers were inspired by graphic artwork, abstract, modern, naïve and tribal art, pop art and collages. Once more, these artistic influences help travel through different eras; the 40s, 50s, 60s, 70s, 80s and 2000. This trend is perfect for those who love originality and a guaranteed visual impact!



Badgley Mischka



Aurélie Bidermann

HITCHCOCK'S
MUSES, FITTED
SKIRTS, SATIN,
RETRO, THE
40S, 50S AND
60S, FEMININE,
TAILOR,
ELEGANT AND
TASTEFUL,
PEARLS, RED
LIPSTICK



Christian Dior



Kara Ross



Badgley Mischka

Miss Hitchcock

Hitchcock's muses; Grace Kelly, Eva Marie Saint, Ingrid Bergman and Tippi Hedren are all actresses that marked their time by their unique style. Hitchcock's female characters were always intelligent, free women and yet they were endowed with propriety. Echoing the great master of suspense, the fashion line that derives its inspiration from him is elegant and tasteful. Dresses are waisted, chignons are sophisticated and the lipstick shade is undoubtedly red. Pencil and stretch skirts, tailors and evening dresses can be found in this line. Small accessories such as minaudiere hand purses, cigarette holders, hats, Bakelite jewelry and pearls complete this sophisticated look.



Versace

CASUAL LOOK,
LEATHER, STUDS,
PERFECTO®, GRUNGE,
PUNK, NEW-WAVE,
VINYL, STUDDED
LEATHER



Saint Laurent



Alexis Bittar



Eddie Borgo



Kara Ross



Diesel Black Gold

Rock the Casbah

Studded leather, perfecto® and tartan pattern blouses, here are the indispensables of this trend that covers several great musical movements of the 80s and 90s; punk, new wave, grunge and their likes which remained incrustated in the pop and rock music of that time. Outfits are made of leather pants, round shouldered jackets or oversized, boots and racing shorts. Even vinyl outfits are being seen albeit their scarcity during the last couples of seasons. Accompanied with plastron necklaces made of intertwined chain and various kinds of studs, these outfits will please women who do not fear to sport a casual look or a flashy celebrity look.

Fashion Wear Trends



Ann Demeulemeester



Gareth Pugh



Fenton



Alexis Bittar



Gareth Pugh

DARKNESS,
OBSCURITY,
MYSTERY, BLACK,
MELANCHOLY,
LEGEND, CAPE,
FEATHERS AND
BLACK LEATHERS

Dusk

Darkness, melancholy and dark poetry transcend this trend. Outfits relate to those of fantasy characters from tales and legends but also from mourning clothes. Clothes inspired from Germanic legends, nocturnal decors and mysterious forest. This trend observes bat-like shapes, moths, and branch-like patterns, raven feathers, hats and capes. The colors that make this trend are come from obscurity: black, anthracite, mid-night blue but also white, as a light obscure contrast that recalls moonlight. Black leather and metals are prized.



Chado Ralph Rucci



Ben-Amun



Dsquared²



Ben-Amun



Tory Burch



Giorgio Armani

GOLDEN TWENTIES, 1920, FEMININE, DELICATE, TASSELS,
JEWELS, MAGNIFICENT, FLUID LINES,
AND BEADWORK

The Great Gatsby

Here is a trend for those who have a knack for the Golden Twenties (aka Les années folles), Jazz, Fox trot and Charleston. Outfits seem inspired from the setting of the Great Gatsby, from Francis Scott Fitzgerald's novel The Great Gatsby. It's the romantic and feminine trend by excellence. These outfits' lines are fluids and natural. They are under the influence of the Golden twenties during which time the corset was gladly put aside. This trend bursts with textures and style. Velvet, silk, feathers, beadwork and tassels are at the core this trend. Knee length dresses, the cloche hat and men suits with straight-legged pants have their place this season.

Color Trends



Off-white

Céline



Black

Jean Paul Gaultier



Black & White

Oscar de la Renta

Black / White

Black is worn from head to toes, at times alone, sometimes to add a touch of depth to another color. White is worn all over or paired with black, a light shade of beige or carnation pink. Note that several designers also use **off-white** this season.



Midnight blue



Zaffre



Periwinkle

Blue

Blue is still very present this season. It can be seen as **zaffre**, **periwinkle** and **midnight blue**. Cyan, majorelle blue, indigo, peacock blue and bleu charette (literally cart blue) also have their place in wardrobes this season. The trendiest blues are the most vivid; cyan, teal and Tiffany blue.

Color Trends



Gucci

Byzantine



Salvatore Ferragamo

Eggplant



Chado Ralph Rucci

Violet

Violet and Purple

Violets and purples make a come back after several seasons in the dark. **Violet** is the one that is in this season but other shades are also seen such as **eggplant**, **bishop violet** and **byzantine**. The byzantine shades, red-violet, crimson purple also color this season's collections just like indigo and lilacs.



Color Trends



Donna Karan

Dark grey



Missoni

Pearl grey



Stella McCartney

Slate grey

Grey

Gray shades this season are **dark grey** and **slate grey**. The other trendy shades are silver gray, Payne's gray, iron, steel, chestnut gray, pearl, grebe and bluish slate.

[illegible]

The red palette is mainly composed of **burgundy**, **gooseberry**, **fire**, aniline, alizarin red and magenta.



Chartreuse green

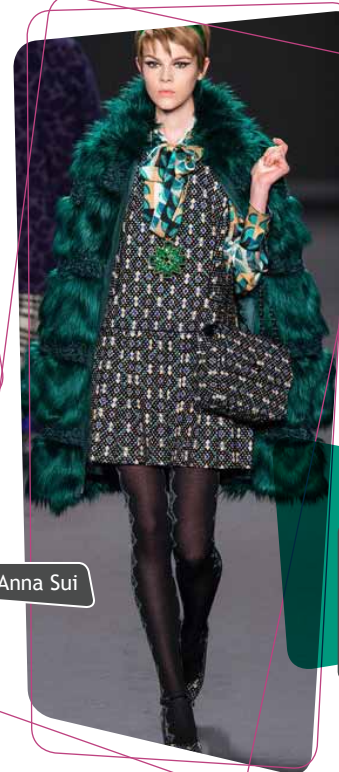


Oscar de la Renta



Jean Paul Gaultier

British racing green



Anna Sui

Pine green

Green

The shades of green to adopt are pine green, military, *chartreuse* green and emerald, although kaki green, British racing green, opaline and pistachio green are also “in”.

Color Trends



Marc Jacobs

Ochre



Badgley Mischka



Chocolate

Chado Ralph Rucci



Pink beige

Beige and Brown

Beiges are found under various light shades such as **pink beige**, **soft cinnamon** and **ochre**, whereas the palette of browns mainly includes dark shades such as **chocolate brown**, **cashew** and **chestnut**.



Color Trends

Yellow

Straw yellow, primary yellow, sulfur, venetian and gold add a dash of sun in this cold season's collections.

Color Trends



Blumarine



Bisque pink

Neon pink



Chado Ralph Rucci

Oscar de la Renta



Hollywood pink

Pink

Pinks are not as present this season, but their shades are not less varied. They range from neon pink, Hollywood, bisque, incarnate, fuchsia, candy and sugarcoated almonds.



Orange neon



Michael Kors



Michael Kors

Tangerine



Marc by Marc Jacobs

Coral

Orange

Oranges are very vibrant and are also seen in shade of coral, tangerine, orange neon and mandarin.

Color Trends



Donna Karan



Lanvin



Blumarine



Missoni

Duos

Beige & Black

White & Carnation



Michael Kors



Chloé



Alexander Wang



Donna Karan

Duos

Blue & Black

Brown & Grey

Color Trends



Haider Ackermann



Prada



Badgley Mischka



Missoni

Duos

Brown & Black

Grey & Black

Color Trends



Versace



Etro



Chado Ralph Rucci



Alberta Ferretti

Duos

Yellow & Black

Black & White

Color Trends



Badgley Mischka



Roberto Cavalli



Christian Dior



Moschino

Duos

Black & Gold

Red & Black



Jean Paul Gaultier



Kara Ross



Anndra Neen



Hervé Van de Straten



Fenton



Badgley Mischka

Jewelry types

Necklaces

Once more this season we can't avoid plastron and pectoral necklaces. This trend is still alive but this time, several necklaces that are being seen are flexible and mold the body. They are also very colorful and present in any style, made of chainmail, plastic, metal, chain, intertwined metal wires, beads linked together, stones and chains of crystal.

Jewelry Trends



Giorgio Armani



Ben-Amun



House of Lavande



Lele Sadoughi



Ralph Lauren

Jewelry types

Necklaces (sequel)

The **sautoir necklace** seems to be making a come back after several seasons on the bench. It is mainly composed of chain and links assembled at regular interval or not or made of chain and a pendant.

Kelly Wearstler



Hervé Van der Straeten



Dezso by Sara Beltran



Alexis Bittar



Aurélie Bidermann



Jewelry types

Necklaces (sequel)

The torque necklace is also one of the lucky ones being displayed on podiums this season. It is rigid, simple and efficient. It opens from the front or the back.

Jewelry Trends



Jewelry types

Necklaces (sequel)

Chokers are fewer but remain on the scene. The most prized necklaces are the rigid ones or the ones with large links.



Christian Dior



Fenton



Fallon



Saint Laurent



Tory Burch

Jewelry types

Necklaces (sequel)

Other necklaces in the spotlight this season are the short and crowded necklaces. They are numerous, mainly made of amalgams of intertwined chains and beads. Also, mid length necklaces made with chain with a fixed element are being noticed.

Jewelry Trends



Erickson Beamon



Wilfredo Rosado



Anna Sui



Ben-Amun



Just Cavalli

Jewelry types

Necklaces (sequel)

These are rarely seen but remain present; the shirt collar chains (and tie!), the lavalier necklace ("y" shaped) and the lariat (lasso) necklace.



House of Lavande



Kelly Wearstler



Balmain

Dannijo



Ana Khouri



Jill Golden



Emporio Armani

Jewelry types

Earrings

Earrings this season have length. Chandelier earrings are prized but also earrings that are chin-length. Creoles are big and thin and mostly made of metal. The trend favors the ear pin rather than the earring hook. On the same line of thought, the ear stud is relegated to the jewelry box this wintery season.

Jewelry Trends



Chanel



Ana Khouri



Dannijo



Lele Sadoughi



Lizzie Fortunato

Saint Laurent



Veronique Branquinho

Jewelry types

Bracelets

We see more and more rigid bracelets with articulations or made with different sections threaded on a plastic string. Bangle bracelets are cast aside for this less looser bracelet. Nevertheless, the bangle bracelet still has its place on our wrists. Nothing changes on the side of cuff bracelets, they remain omnipresent. They can even be seen being worn on the opposite side (reverse style) where the opening that is usually finely crafted, is worn on top of the wrist. A lot of chains, metal, leather, stones and crystals are used to make bracelets of any and all kinds.

Fallon



Dannijo



Lele Sadoughi



House of Waris



Dannijo



Delfina Delettrez



Eddie Borgo



Jewelry types

Rings

Rings abound. Some are more voluminous and colorful others are more sober. More and more rings are seen nowadays, including multi-finger rings, signet rings and rings that are open on top like a reverse cuff bracelet. Prized metal colors are gold, rose copper and shiny black metal.

Jewelry Trends



Roberto Cavalli



Anna Sui

Ben-Amun



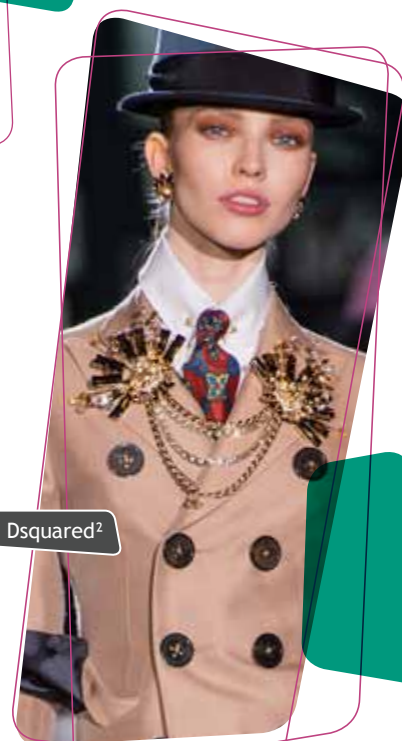
Lanvin



Wilfredo Rosado



Dsquared²



Jewelry types

Brooches

Brooches are still in the run. They represent flowers, an eagle attacking a snake, a heart, insects, crosses and other figurative or abstract representations. They decorate vests, dresses, scarves, coats and shirt collars. The brooch with two parts linked by chain and worn around the collar is being noticed this season.



Fallon



Michael Kors



Mawi



Ralph Lauren



Akong

CHAINS

The components

Not to be ignored: gold-colored and shiny black metal chain. Silver colors and rose copper are also present, although slightly outshined by the two others. Once more, the curb chain maintains its place on the podium however, several other types of chains are being noticed such as the cable chain, the venetian, snake and of course the crystals chain which adds a dash of color and sparkle to creations. It is often seen in clear crystal, bright colors such as green, blue, red or opaque white.

What are the **musts** to integrate to your jewelry pieces this season?

Jewelry Trends



Dannijo



Dannijo



Lele Sadoughi



Fallon



STONES AND CRYSTALS



Lele Sadoughi

The components

Stones and crystals cover rings, bracelets, broaches, earrings and necklaces but it is not a novelty this season. Crystal inclusions (and imitations) are everywhere, just as pavement (jewelry), giving the impression that stones cover the metal. Some jewelry pieces are made of an amalgam of crystals, so as to almost totally cover the metal, making it almost unnoticeable. Variations of Shamballa beads can also be seen.



House of Waris



Alexis Bittar



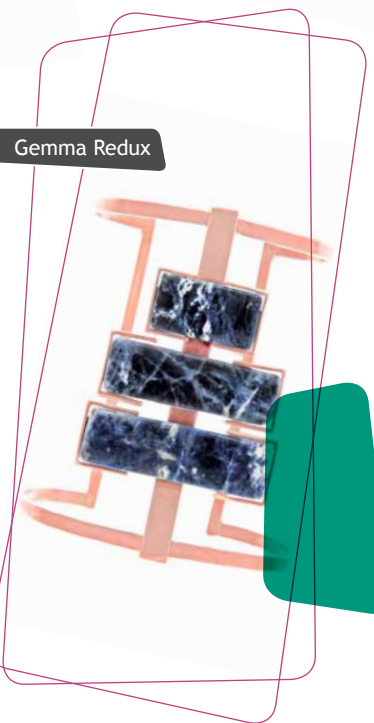
Van Cleef & Arpels



Lele Sadoughi



GEMSTONES



Gemma Redux

The components

This season **gemstones** are the must. They can be found as voluminous, flashy and warm. Malachite, sodalite, lapis lazuli, larimar (blue pectolite) and chrysoprase are the gemstone stars this wintry season. They brighten collections by their color and exotic aspect.

Jewelry Trends



Hermès

Delvaux



Valextra



LEATHER



Balenciaga



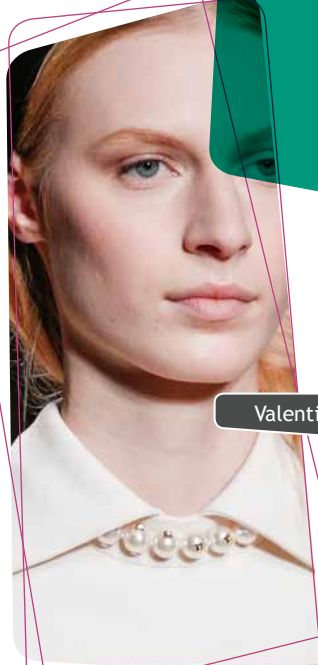
Rag & Bone

Marni



The components

Leather is being noticed, mainly amongst bracelets. It is being seen as a system of tassels equipped with a system of belt ties, cuff links or bangle bracelets of which some sections are covered with leather. It is also found as braided cords or simple tassels.



Valentino



Lanvin



Aurélie Bidermann



Christian Dior



Ben-Amun



PEARLS



Ben-Amun

The components

Once more pearls are present and bring a touch of purity, simplicity and splendor. Only seen in white or crèmes they are often paired with gold-colored metal.

Jewelry Trends



Just Cavalli



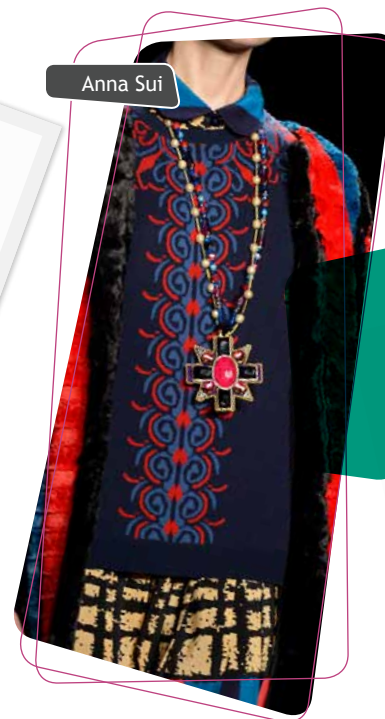
Vionnet



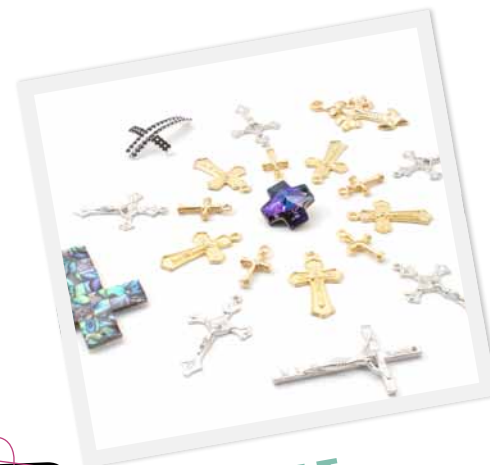
Vionnet



TASSELS



Anna Sui



CROIX



Emilio Pucci

Anndra Neen

The components

Tassels are less frequent but are still present. Small or big, they are made of chains or fabrics.

Crosses are more present then during the last season. They can have a traditional or a more contemporary aspect.



Versace



Saint Laurent



Fallon



Jill Golden

Kelly Wearstler



Mawi

Jewelry themes

Spiky jewelry!

Tips, studs, teeth, arrowheads, naval mine, etc. We take advantage of this to exorcise the wicked with these jewelry pieces with tips as common denominator. Whether angular geometrical structures, triangles, diamonds, pieces decorated with studs and spikes, these jewels occasionally seem aggressive, sometimes original but are indisputable present.

Jewelry Trends



Etername



Wilfredo Rosado



Gilan

Van Cleefs & Arpels



Lele Sadoughi



Jewelry themes Green, green and green!

A wink to Pantone, which declared that emerald green, is the color for 2013. Results: a lot of green around us and a lot on our jewelry! Of course we won't limit ourselves to emerald. Several designers use malachite this season, probably for its color that is so close to emerald. Lets take advantage of it! This shade matches any carnation and is perfect for any occasion.

See our column on emerald green as well as our selection of emerald green products:

http://clubbeadplus.com/fr/Couleur_annee_2013



Kara Ross



Roberto Cavalli



Emilio Pucci



House of Lavande



Alexis Bittar



Kara Ross



Jewelry themes

The year of the snake

According to Chinese astrology, this year is the year of the snake. As such, the mysterious and symbolic aspect of the snake inspired several designers. Mostly represented figuratively, it can be seen with textures that are similar to that of a snake's skin. They are often made of gold or shiny black metal, sometimes covered with small crystals are made of chains. Don't worry they are harmless! Let yourself be tempted!

Jewelry Trends



Roberto Cavalli



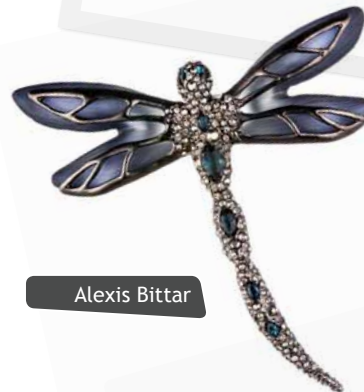
Lanvin



Tory Burch



Roberto Cavalli



Alexis Bittar



Jen Kao

Jewelry themes Organic

This season's jewelry pieces bubbles with life but we are far from our usual cute fishes and small little birds. We are more into little critters. Indeed, moths, dragonflies, spiders on roses, crustacean's claws, beetles and insects add life to jewelry pieces, often shaped in brooches, necklaces and bracelets.



Wilfredo Rosado



Alexis Bittar



Van Cleef & Arpels



Dannijo



Anndra Neen



Tory Burch

Jewelry themes Floral

Obviously, flowers are scarcer during this wintery season. However, they continue to embellish jewelry pieces with elegance, romanticism and delicacy. They are often represented in metal, mother of pearl, stone and other synthetic matters and are at times covered with crystals or lacquer. They are mostly very chaste and can be found on any kind of jewelry on an array of various colors.



www.clubbeadplus.com