

FALL/WINTER TRENDS

2015/2016



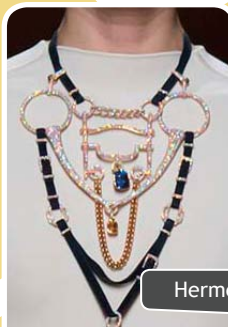
Jewelry types

NECKLACES

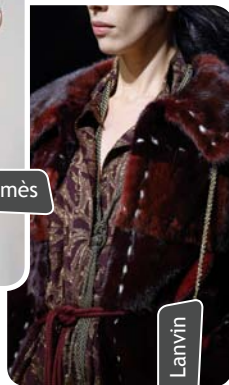
- CHOKER
- BIB NECKLACES
- Several necklaces worn at once
- Long (Opera) necklaces
- Lavalier necklaces
- Multi-row necklaces
- Rigid necklaces
- Pendants on chains



Chanel



Hermès



Lanvin



Marni



Versace



Giorgio Armani

BRACELETS

- RIGIDS : bangles and cuffs
- Multi-row bracelets
- Traditional delicate bracelets
- Leather bracelets
- Elastic bracelets



Emporio Armani



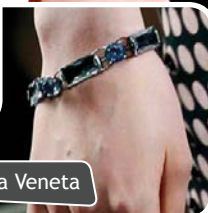
Prada



Bottega Veneta



Chanel



Bottega Veneta



Roberto Cavalli



Dolce & Gabbana

BROOCHES

- MUST-HAVE OF THE SEASON
- SHOWY
- Brooches worn everywhere on the outfit
- Fibulae (pin for fastening garments)
- Several brooches worn at once



Balenciaga



Chanel

Which jewelry types are seen on the podiums?

RINGS

- BULKY RINGS
- OPEN RINGS (like cuff bracelets)
- Several rings worn at once
- Traditional rings
- Multi finger rings (for 2 to 3 fingers)

Giorgio Armani



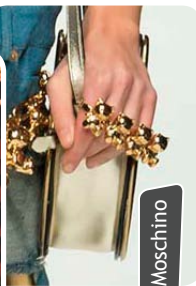
Gucci



Dolce & Gabbana



Moschino



Oscar de la Renta



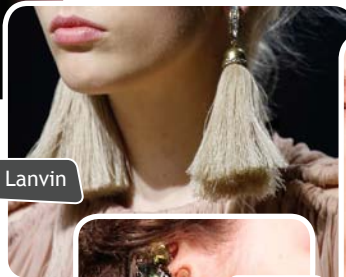
EARRINGS

- BIG (statement, XXL)
- Asymmetrical earrings: different earrings or single earring
- Covering earrings (cover a part of the ear's lobe or tip)
- Several earrings worn at once
- Traditional earrings: studs, creoles, pendant and long earrings

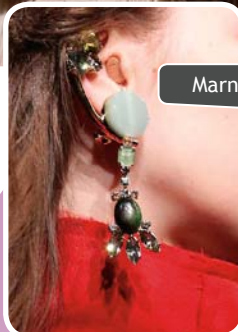
Christian Dior



Lanvin



Marni



Marni



Givenchy



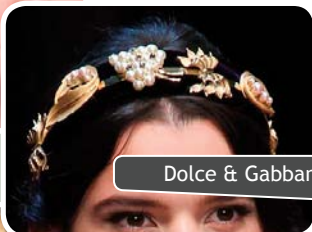
OTHER ACCESSORIES

- Shoes
- Handbags
- Hair accessories
- Headphones
- Belts

Dolce & Gabbana



Dolce & Gabbana



Chanel

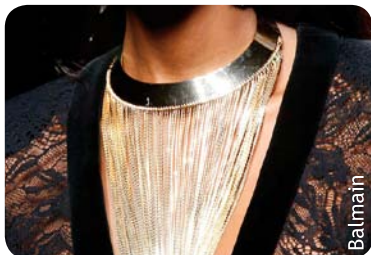


Céline



Components

CHAINS



Balmain



Chanel



Lanvin

PEARLS MOTHER OF PEARL



Balenciaga



Chanel

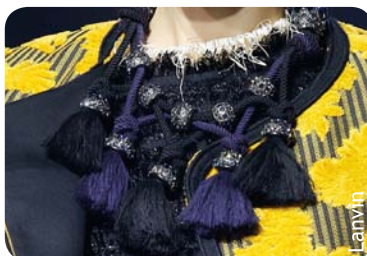


Ralph Lauren

TASSELS



Burberry Prorsum



Lanvin



Tory Burch

FRINGES



Vissoni



Nina Ricci



Sonia Rykiel

What are the “musts” to integrate to your jewelry this season?



Altuzarra



Baja East



Giorgio Armani

TEXTILES



Giorgio Armani



JW Anderson



Prada

SYNTHETIC MATERIALS



Chanel



Dsquared²



Just Cavalli

CRYSTALS STONES



Chanel



Etro

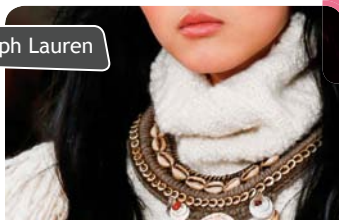


Narciso Rodriguez

METAL

TRIBAL

Ralph Lauren



Anna Sui

Tory Burch



Club Bead Plus
Lobi



Club Bead Plus
Dakis



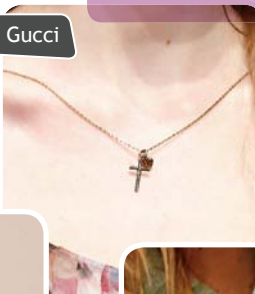
Club Bead Plus
Asymé



Club Bead Plus
Fatma

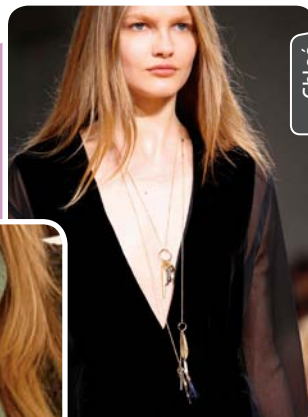


Gucci



LUCKY CHARMS

Chloé



Polo Ralph Lauren



What are the styles often seen in the collections?



Balmain



Dries Van Noten



Victoria Beckham



Club Bead Plus
Kokonati

BOLD JEWELRY



Anna Sui

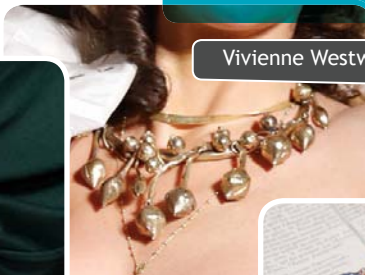


Club Bead Plus
Bakélite

WOOD NYMPH



Dolce & Gabbana



Vivienne Westwood



Club Bead Plus
Dame Buissonnière



Club Bead Plus
Tiarelle

Styles (sequel)

SCULPTURAL

Club Bead Plus
Vortex



Club Bead Plus
Bellagio



Stella McCartney



Proenza Schouler



Club Bead Plus
Ondes



Donna Karan

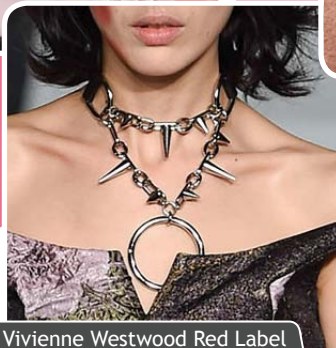
TOUGH GIRL



Giorgio Armani



Saint Laurent



Vivienne Westwood Red Label



Club Bead Plus
Lisbeth



Club Bead Plus
Gail

Club Bead Plus
Pétunia



MAJESTIC

Chanel



Club Bead Plus
Magnificence



Club Bead Plus
Athénais



Gucci

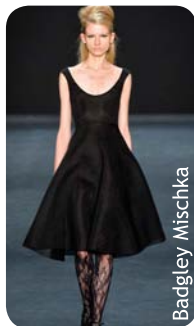


Dsquared²



Colors

BLACK



Badgley Mischka



Calvin Klein Collection



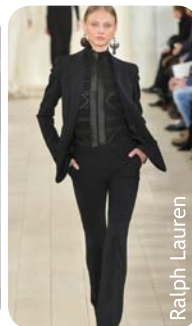
Chanel



Dolce & Gabbana



Lanvin



Ralph Lauren

GREY



Chalayan



Chloé



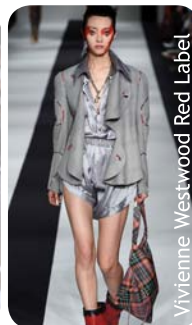
Marni



Ralph Lauren

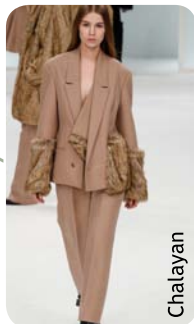


Stella McCartney



Vivienne Westwood Red Label

BROWN/BEIGE



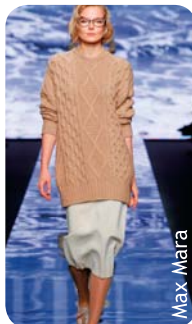
Chalayan



Fendi



Lanvin



Max Mara



Ralph Lauren



Victoria Beckham

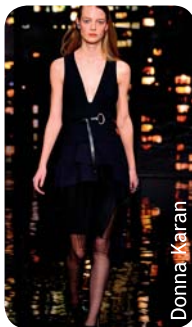
BLUE



Altuzarra



Anna Sui



Donna Karan



Prada



Aquilano.Rimondi



Topshop Unique

The range of colors of the season mainly includes the following colors:



Alberta Ferretti



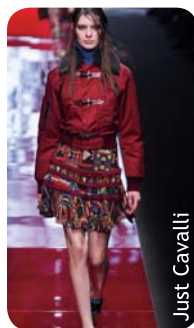
Altuzarra



Badgley Mischka



Emporio Armani



Just Cavalli



Oscar de la Renta

RED



BCBG Max Azria



Chanel



Chloé



Fendi



Ralph Lauren



Roberto Cavalli

WHITE



Burberry Prorsum



Michael Kors



Prada



Versace



Stella McCartney



Salvatore Ferragamo

GREEN



Balmain



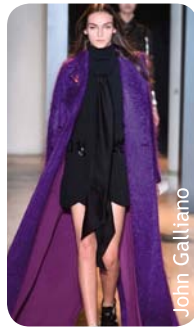
Emporio Armani



Iceberg



John Galiano



John Galiano



Oscar de la Renta

PURPLE/VIOLET



www.clubbeadplus.com