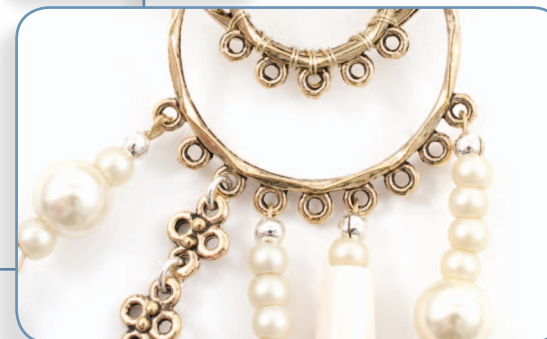
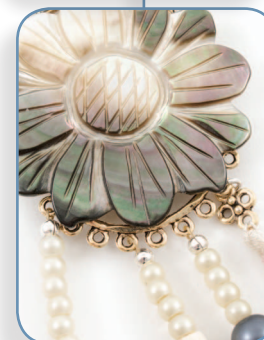
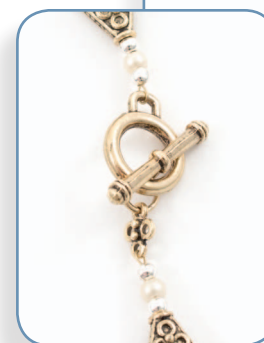


2401-1278

CODE QTY DESCRIPTION www.clubbeadplus.com

1001-0127	2 m	Griffin silk thread, white, size 02, 0.45 mm
1102-3768-04	8	Glass press beads, faceted oval, montana, 9 x 12 mm
1102-3780-02	2	Glass press beads, twisted round, champagne, 22 mm
1107-0902-02	46	Glass pearls, round, cream, 8 mm
1107-0905-02	9	Glass pearls, round, cream, 14 mm
1107-0907-02	1	Glass pearl, round, cream, 18 mm
1107-0910-02	264	Glass pearls, round, matt cream, 4 mm
1107-0912-03	21	Glass pearls, round, matt grey, 8 mm
1109-1367-02	25	Bone beads, pipe, natural, 1"
1109-1387-03	1	Bone pendant, teeth with nickel bail, natural, 29 mm
1111-1300-OXGL	1	Metal bead, round, fancy, antique gold, 18 mm
1111-1304-OXGL	3	Metal beads, round, fancy, antique gold, 12 mm
1111-1308-OXGL	13	Metal beads, cylinder, fancy, antique gold, 6 x 10 mm
1111-1313-OXGL	2	Metal beads, rondelle, fancy, antique gold, 10 x 12 mm
1111-9627	6	Metal charms, coin, antique silver, 16 mm
1112-8164	2	Semi-precious stone beads, round, blue grey tainted agate, 18 mm
1114-1090	1	Black sea shell, flower pendant, 42 mm
1603-0204-45	± 4,5 m	Tigertail, light gold, 0.018
1606-1028-04	± 2 m	Beaders' Choice copper wire, silver plated, champagne, 28 gauge
1702-0902-GL	1	Toggle clasp, gold, 15 mm
1704-0300-oxgl	18	Bead caps, fancy, antique gold, 8 mm
1704-0303-oxgl	4	Bead caps, fancy, antique gold, 7 x 19 mm
1704-0304-oxgl	8	Bead caps, fancy, antique gold, 6 x 12 mm
1705-0203	19	Crimps, round, silver, 2 mm
1705-0401-SL	19	Crimp covers, silver, 3 mm
1707-0300-SL	21	Jump rings, silver, 4 mm
1708-0408-OXGL	4	Chandelier connectors, circle, antique gold, 5/9 loops, 33 x 37 mm
1717-0100-OXGL	2	Connectors, fancy triangle, antique gold, 1 to 3 holes, 14 x 15 mm
1717-0106-OXGL	6	Connectors, fancy, 4 loops, antique gold, 7 x 10 mm
1114-1017	2	Black sea shells, triangle, 17 x 18 mm
1114-1022	3	Black sea shells, coin, 20 mm



TOOLS : Bead Stoppers, Beadfix glue, Beadfix Gel adhesive, flush cutters, 2 flat nose pliers, 2 crimping pliers (macro and standard)