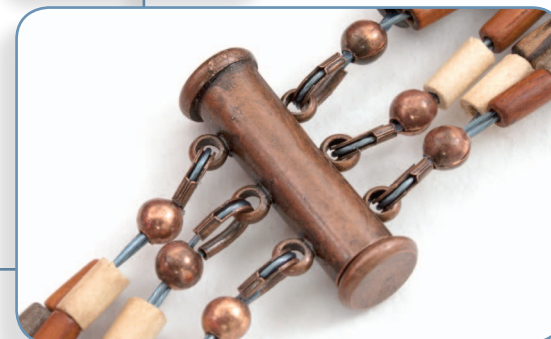
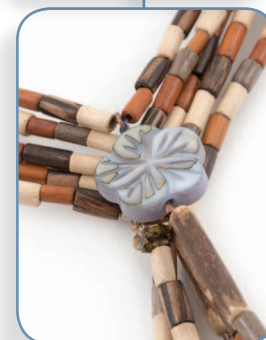


2401-1180

CODE QTY DESCRIPTION www.clubbeadplus.com

1109-1309-02	6	Bone beads, round ball, dark brown, engraved design, 8 mm
1110-0000	18	Hazelwood beads, tube, natural, app. 3 x 10 mm
1110-6005-02	± 88	Wood beads, graywood, cylinder, 2.5 x 5 mm
1110-6005-03	± 88	Wood beads, bayong, cylinder, 2.5 x 5 mm
1110-6005-05	± 88	Wood beads, whitewood, cylinder, 2.5 x 5 mm
1110-6005-06	± 88	Wood beads, old palmwood, cylinder, 2.5 x 5 mm
1114-1304-13	7	Lake shell beads, flower, five petals, blue, 12 mm
1116-0223	47	Coconut beads, tube, natural, app. 3 x 15 mm
1702-0381-OXCO	1	Magnetic clasp, 3 rows, antique copper, 5 x 20 mm
1703-0310-OXCO	6	Finishing loop connectors, antique copper
1705-0204	17	Crimps, round, antique copper, 2 mm
1705-0313-OXCO	7	Coupling bars, 5 holes, antique copper
1705-0401-OXCO	11	Crimp covers, antique copper, 3 mm
1106-2301-AC	9	Plastic beads, metallized, flower, antique copper, 6 mm
1603-0126-45	± 5 m	Tigertail, sea green, 0.018



TOOLS : Flat nose pliers, cutters, 2 crimping pliers (macro and standard)