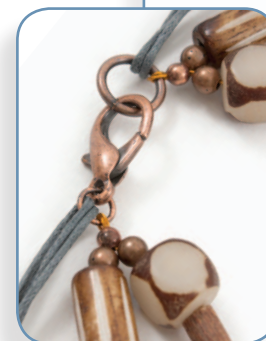


2401-1155

CODE QTY DESCRIPTION [www.clubbeadplus.com](http://www.clubbeadplus.com)

1109-1203-01	13	Horn beads, flat square, black, 12 mm
1109-1322-02	6	Bone beads, tube, engraved design, dark brown, 8 x 24 mm
1109-1338-01	5	Bone beads, free form, donut, painted design, black, 34 mm
1110-0004	13	Hazelwood beads, tube, natural, app. 7 x 20 mm
1110-4355	8	Seed beads, big pili lentil, natural brown, app. 20 x 40 mm
1110-4356	23	Nut beads, buri tiger, round corners square, 10 mm
1111-0904-OXCO	4	Metal beads, round, antique copper, 4 mm
1116-0202-BLK	6	Coconut beads, teeth, side drilled, black, 2"
1116-0202-NAT	6	Coconut beads, teeth, side drilled, natural, 2"
1603-0229-45	± 1,2 m	Tigertail, rust, 0.018
1604-0121	± 6,2 m	Cotton waxed cord, grey, 1 mm
1606-1024-16	± 1 m	Beaders' Choice copper wire, brown, 24 gauge
1702-0440-OXCO	1	Fish clasp, antique copper, 18 mm
1705-0204	2	Crimps, round, antique copper, 2 mm
1705-0401-OXCO	2	Crimp covers, antique copper, 3 mm
1707-0302-OXCO	1	Jump ring, antique copper, 6 mm
1707-0306-OXCO	1	Jump ring, antique copper, 10 mm



TOOLS : Bead reamer, steel block, scissors, BeadFix glue, hammer, cutters, 2 flat nose pliers, 2 crimping pliers (standard and macro), round nose pliers