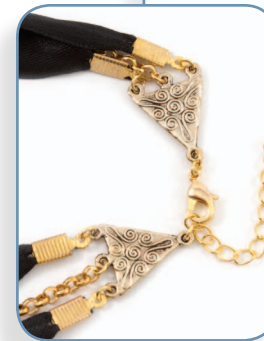


2401-1183

CODE QTY DESCRIPTION www.clubbeadplus.com

| | | |
|----------------|---------|---|
| 1110-8008-07 | 1 | Wood bead, flat round, gold, 30 mm |
| 1110-8009-07 | 6 | Wood beads, tube, gold, 7 x 10 mm |
| 1111-0807-GL | 5 | Metal beads, oval ring, with holes, gold, 10 x 15 mm |
| 1610-1001-02 | ± 2,7 m | Silk ribbon, black, 1/2" |
| 1610-1002-02 | ± 1 m | Silk ribbon, black, 1" |
| 1702-0231-GL | 1 | Fish clasp, gold, 12 mm |
| 1703-0286-GL | 4 | "U" connectors, corrugated, gold, 6.5 x 12 mm |
| 1707-0300-GL | 9 | Jump rings, gold, 4 mm |
| 1707-0302-GL | 2 | Jump rings, gold, 6 mm |
| 1708-0402-OXGL | 2 | Metal parts, fancy triangle, with loops, antique gold, 17 x 22 mm |
| 1717-0105-OXGL | 10 | Metal cones, with stripes, antique gold, 10 x 12 mm |
| 2501-0301-MIX | 10 | Velvet pompoms, mix, 1.5 cm |
| 2601-0310-GL | 1 | Soldered extension chain, gold, 2" |
| 2601-0590-GL | 30 cm | Rolo chain, gold, 3.8 mm |
| 2601-0701-20 | ± 22 cm | Aluminum curb chain, gold, 9.7 x 5.9 mm |
| 2601-0702-20 | ± 20 cm | Aluminum curb chain, gold, 4.4 x 2.8 mm |
| 1005-22C | 21 | Seed beads, bugle, silver lined topaz, #5 |
| 1106-2300-AG | 23 | Plastic beads, metallized, spacer, antique gold, 4 x 6 mm |
| 1106-2326-AG | 3 | Plastic beads, metallized, fancy flower, antique gold, 12 mm |
| 1106-2331-AG | 3 | Plastic beads, metallized, fancy donut, antique gold, 17 mm |
| 1714-0122 | 10 | Head pins, gold, wire size 0.7 mm, 38 mm |



TOOLS : Matches or clear nail polish, scissors, E6000 glue, fabric G-S Hypo glue, beading awl, cutters, 2 flat nose pliers, round nose pliers